

APPLICATION NOTE

for

Update PICE 8 Port RS232 device driver

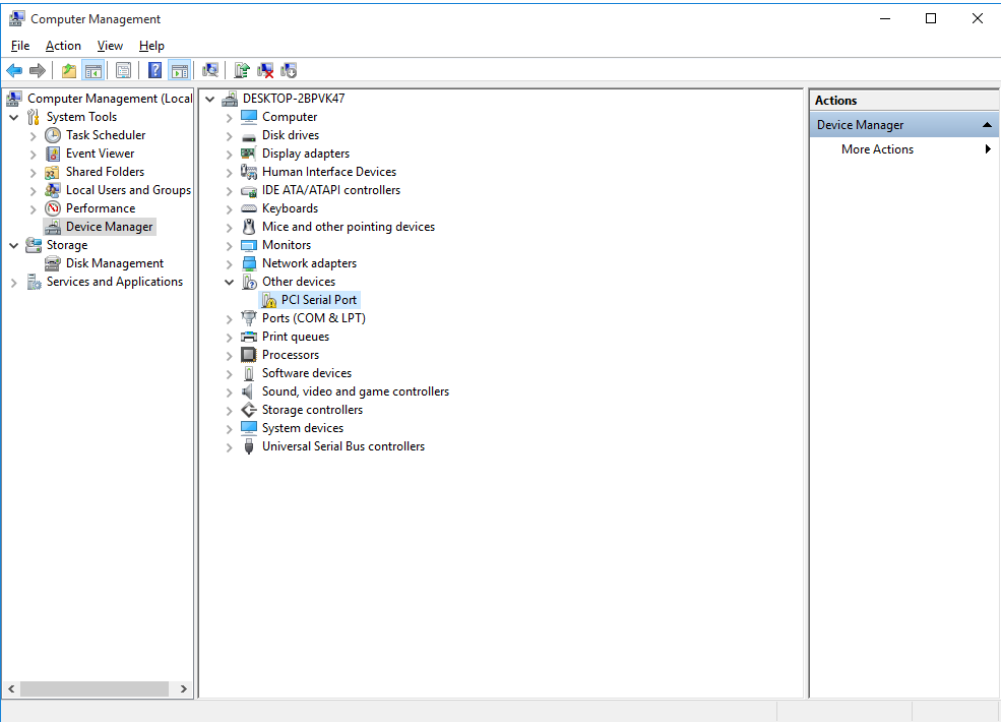
April 26, 2019

Prepared by:

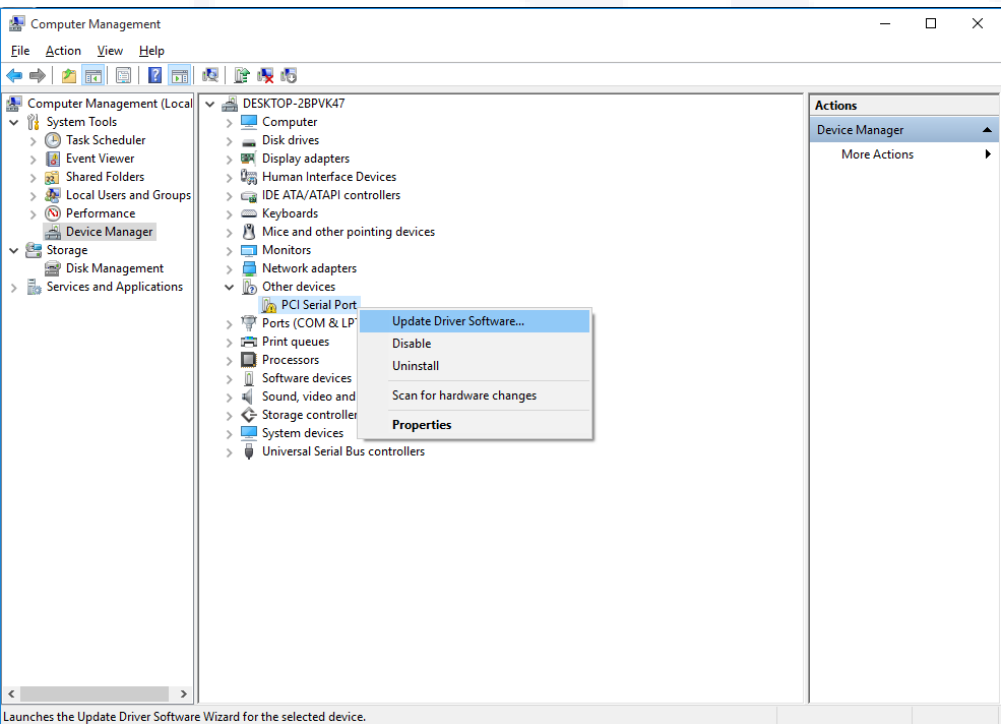
Jimmy Liang

Decision-Computer RD department

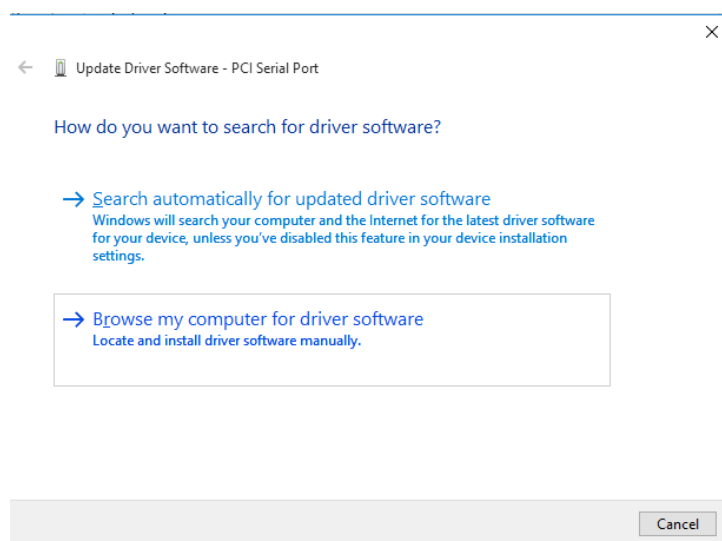
Step 1. Open Device Manager.



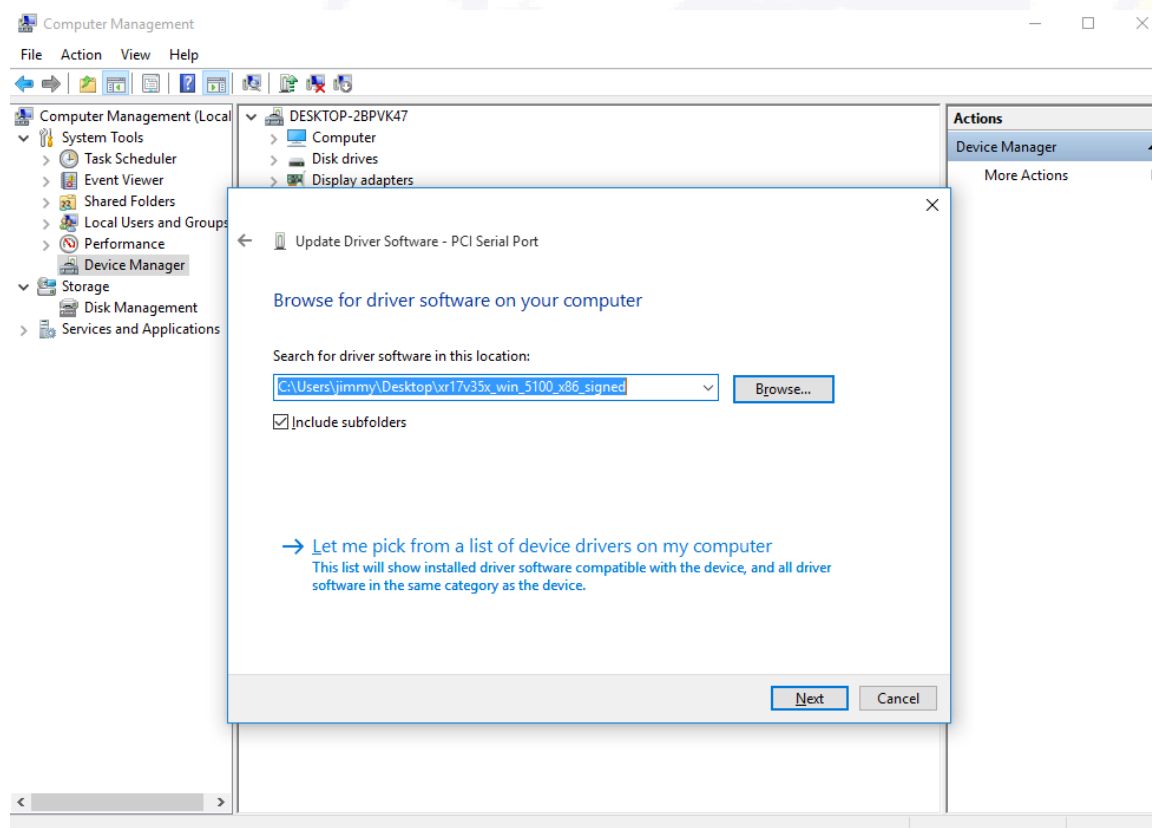
Step 2. Right-click on PCI Serial Port in Other devices section. Then click Update Driver Software...



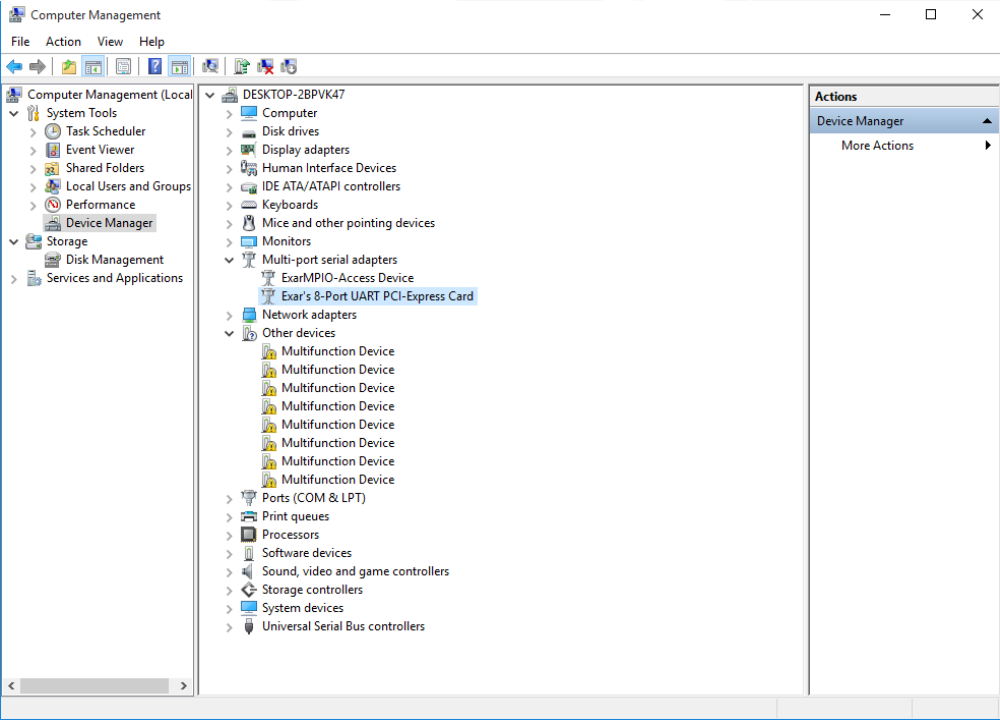
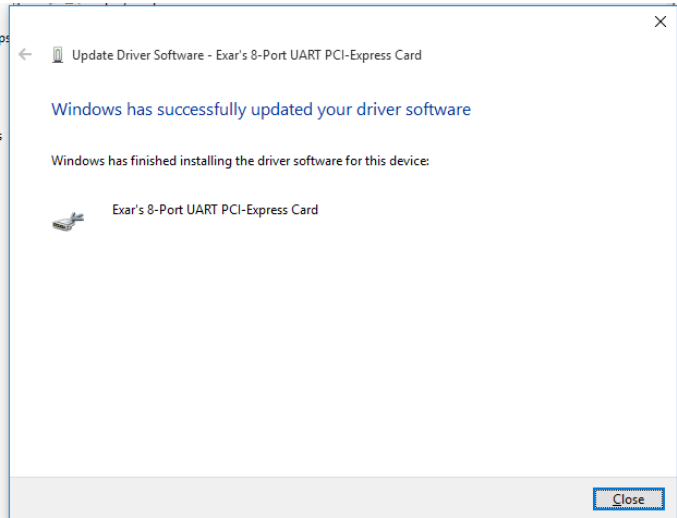
Step 3. Click Browse my computer for driver software.



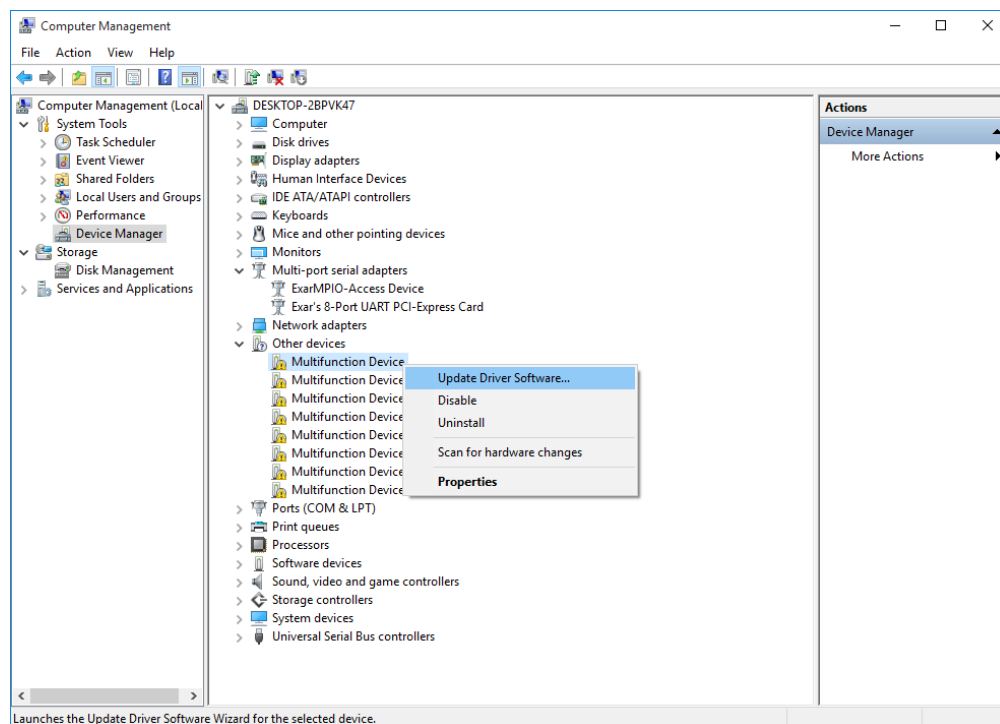
Step 4. Click Brodse... . Then Select path C:\Users\jimmy\Desktop\xr17v35x_win_5100_x86_signed



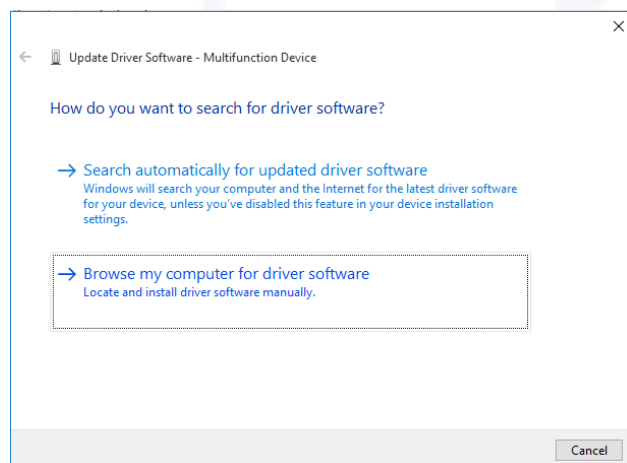
Step 5. Successfully updated.



Step 6. Right-click on Multifunction Device in Other devices section. Then click Update Driver Software...

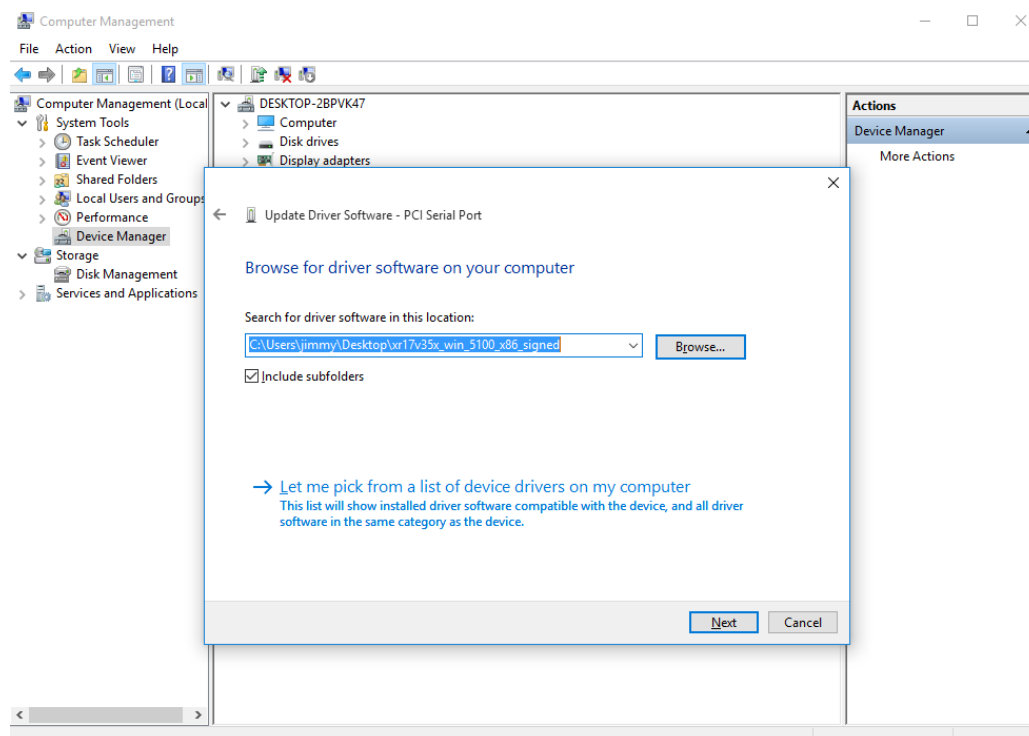


Step 7. Click Browse my computer for driver software.

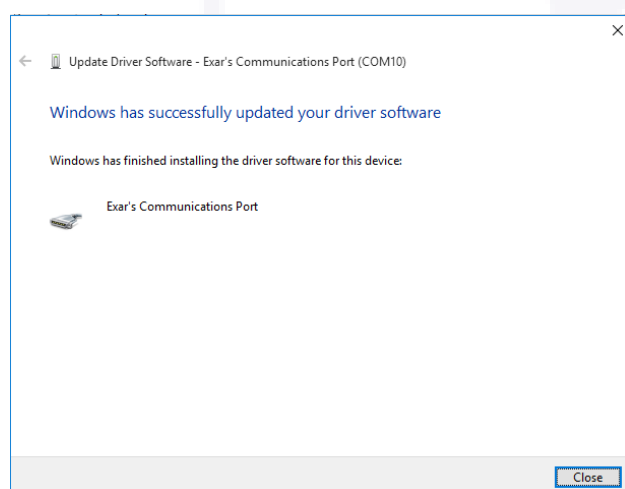


Step 8. Click Brodse... . Then Select path

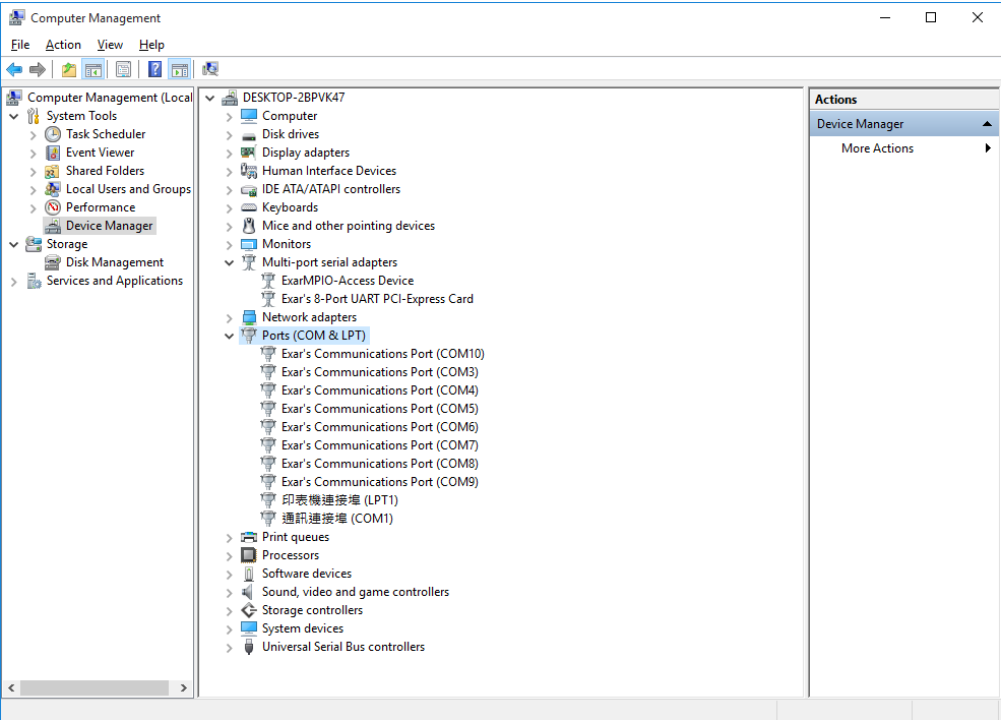
C:\Users\jimmy\Desktop\xr17v35x_win_5100_x86_signed



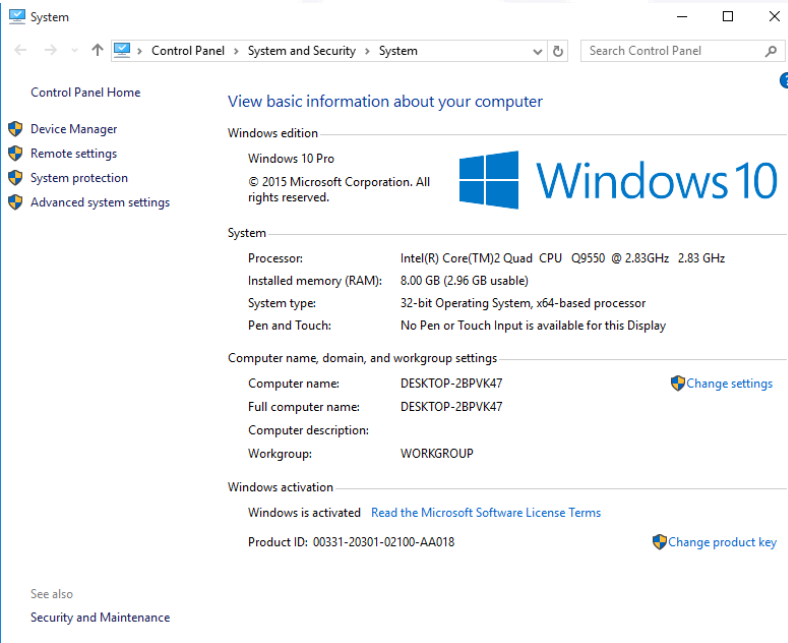
Step 9. Successfully updated.



Step 10. Repeat steps 6 through 9 to succeed



My System windows 10 pro 32bit



Decision Group Inc.
Address: 4/F No. 31, Alley 4, Lane 36, Sec.5,
Ming-Shan East Road Taipei, Taiwan.

Phone: +886227665753
Fax: +886227665702
Sales Email: decision@decision.com.tw

Global Website: www.edecision4u.com
Chinese/Traditional Website:
www.internet-recorder.com.tw